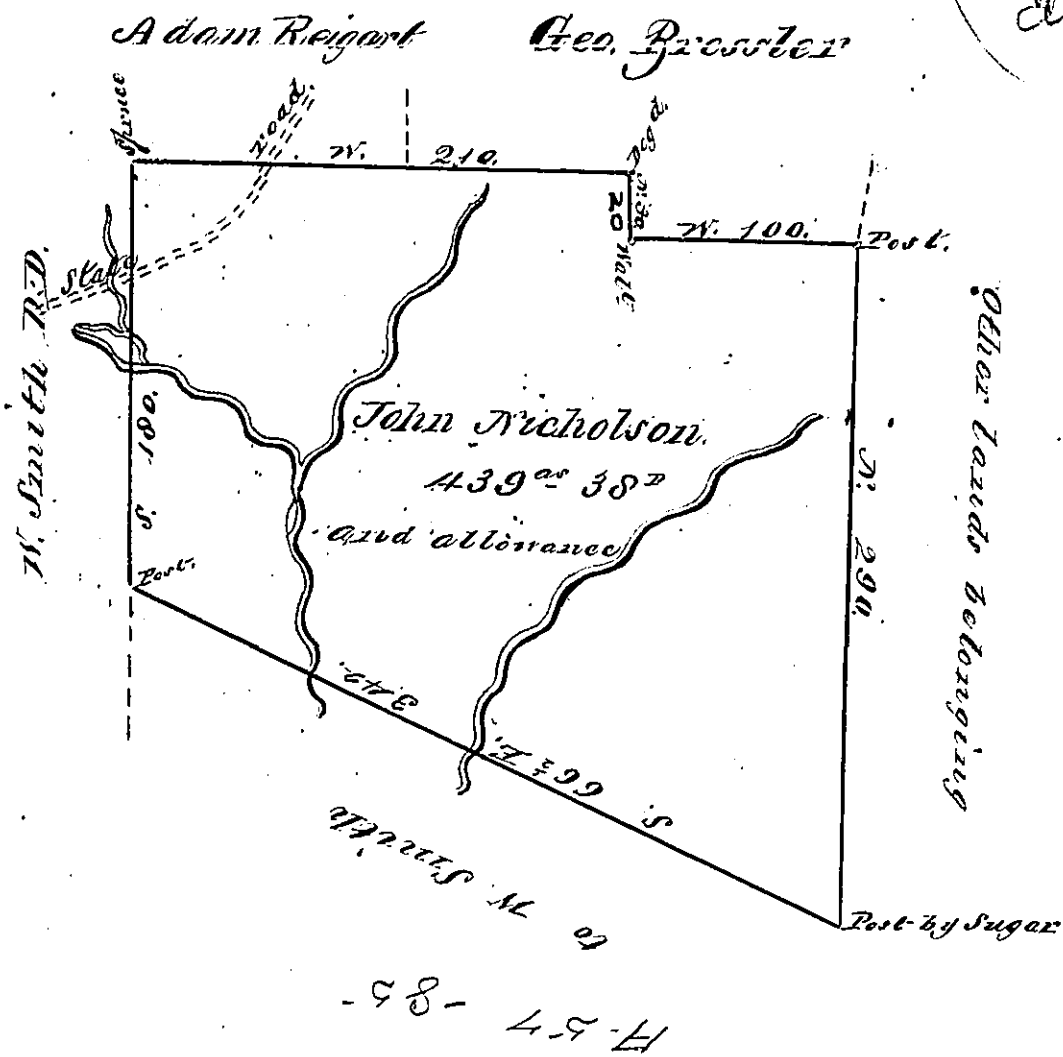


N.
(Upside down)



Situated on the South fork of Conemaugh and near the mouth of Sandy run where the State Road to Spring Creek crosses the same in the Township of ^{Summerhill} Conemaugh, Cambria County, Surveyed — day of Jan'y 1794 by Geo. Woods Junr S.D. in pursuance of warrant dated April 10th 1794 and resurveyed the 30th day of Jan'y 1811. by

Andrew Porter Esq^r.
Surveyor General

W. O. Kuffe S.D.

IN TESTIMONY that the above is a copy of the original remaining on file in the Department of Internal Affairs of Pennsylvania, made conformably to an Act of Assembly approved the 16th day of February, 1833, I have hereunto set my Hand and caused the Seal of said Department to be affixed at Harrisburg, this

Sixth day of April 1877

Wm. McAuley
Secretary of Internal Affairs